



DIRECTIONS

From our Chepstow office proceed up the High Street, through the town arch, continuing up Moor Street, taking a right hand turn onto the A48. Proceed along this road where at the roundabout take the fourth exit towards Chepstow Hospital. Proceed through the traffic lights, down the hill, turning left into Romana Grange. Proceed through Romana Grange passing the park on your right hand side into Woolpitch Wood, taking the second left turn into Buckle Wood where, following the numbering, you will find the property on your right hand side.

SERVICES

All mains services are connected, to include mains gas central heating.  
Council Tax Band G

TENURE - FREEHOLD

You are recommended to have this verified by your legal advisors at your earliest convenience.



3 BUCKLE WOOD, BAYFIELD, CHEPSTOW,  
MONMOUTHSHIRE, NP16 6DX

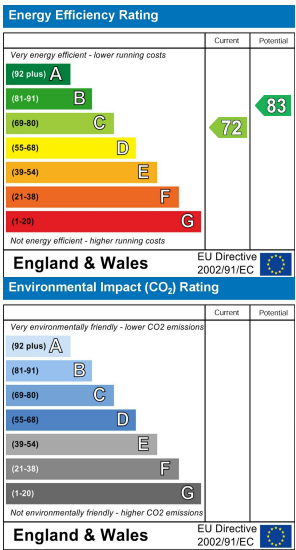
5 3 2 C

£660,000

Sales: 01291 629292  
E: sales@thinkmoon.co.uk



TOTAL FLOOR AREA : 2019 sq.ft. (187.6 sq.m.) approx.  
Whilst every attempt has been made to ensure the accuracy of the floorplan contained here, measurements of doors, windows, rooms and any other items are approximate and no responsibility is taken for any error, omission or mis-statement. This plan is for illustrative purposes only and should be used as such by any prospective purchaser. The services, systems and appliances shown have not been tested and no guarantee as to their operability or efficiency can be given.  
Made with Metreplan ©2025



DISCLAIMER  
These particulars are intended to give a fair description of the property but accuracy cannot be guaranteed and they do not constitute an offer of contract. Intending purchasers must rely on their own inspection of the property. Room sizes should not be relied upon for carpets and furnishing and none of the above appliances/services have been tested by ourselves, we therefore recommend purchasers arrange for a qualified person to check all appliances/services before legal commitment.

OFFERS  
As part of the Estate Agency Act 1979, we have a legal obligation to financially qualify every offer before it is conveyed to the Vendor.

Moon & Co, their clients and any joint agents give notice that:  
1.They are not authorised to make or give any representations or warranties in relation to the property either here or elsewhere, either on their own behalf or on behalf of their client or otherwise. They assume no responsibility for any statement that may be made in these particulars. These particulars do not form part of any offer or contract and must not be relied upon as statements or representations of facts.  
2. Any areas are approximate. The text, photographs and plans are for guidance only and are not necessarily comprehensive. It should not be assumed that the property has all necessary planning, building regulations or consent.



Offered to the market with the benefit of no onward chain, this substantial executive style, detached family home occupies a private and pleasant position within Buckle Wood, a quiet cul-de-sac setting on this sought after residential development. The well-planned and versatile living accommodation is arranged over three floors and would suit a variety of markets to include sizeable family living and multi-generational requirements. The layout briefly comprises to the ground floor, entrance hall, delightful front to back lounge with French doors to rear garden, separate second reception room/formal dining room, open plan kitchen/breakfast/family room and a WC/cloakroom. To the first floor there are three bedrooms including two with en-suite facilities, as well as a family bathroom and on the second floor there are two further double bedrooms/versatile rooms, depending on requirements. The property further benefits a private, extensive driveway providing off street parking for up to four vehicles, a detached double garage and fantastic sizeable low-maintenance gardens to both the front and the rear, catering for everyday family living needs.

The Romana Grange Wood development is located in a convenient position close to Chepstow's town centre with a range of local facilities to include primary and secondary schools, doctor and dental surgeries, shops and pubs. There are good bus, road and rail links with the A48, M48 and M4 motorway networks bringing Newport, Cardiff and Bristol all within commuting distance.



#### **BEDROOM**

**5.33m x 3.28m (17'5" x 10'9")**

A good size double bedroom or indeed offering versatile use as a home office or hobby room. Enjoying a double aspect with a window to the front elevation with panoramic views and Velux window to the rear elevation.

#### **OUTSIDE**

To the front the property is accessed by a shared driveway for three properties which leads to a private extensive area laid to tarmac providing parking for up to four vehicles. Detached double garage with two manual up and over doors, light and power connected. The property affords a sizeable front garden area comprising two areas laid to lawn, bordered by a range of mature hedgerow, plants, shrubs and timber fencing, providing a fantastic additional garden space for entertaining. Paved pedestrian pathway with railings leads to the front entrance with storm porch.

To the rear is a sizeable level paved patio area providing ideal space for relaxing, dining and entertaining. Access from the patio leads onto several areas laid to lawn, perfect for children to play or indeed as a blank canvas for the garden enthusiast. A few steps lead up to a very well-presented level decking area providing a perfect terrace for al-fresco dining and enjoying the sunshine, bordered by a range of attractive mature plants, shrubs and trees, providing privacy and landscaping. Furthermore, there is a useful shed in the far corner for storage. The rear garden is fully enclosed by timber fencing to all sides. Gated pedestrian side access leads to the private driveway and detached double garage.

#### **SERVICES**

All mains services are connected, to include mains gas central heating.





**EN-SUITE SHOWER ROOM**

Comprises a neutral suite to include corner shower cubicle with mains fed shower over, pedestal wash hand basin and low-level WC. Tiled walls. Frosted window to the rear elevation.

**BEDROOM 5**  
**3.28m x 2.64m (10'9" x 8'7")**

A double bedroom affording two windows to the front elevation. Built-in wardrobe. Offering fantastic versatile use, which would make an ideal children’s bedroom or indeed home office if required.

**FAMILY BATHROOM**

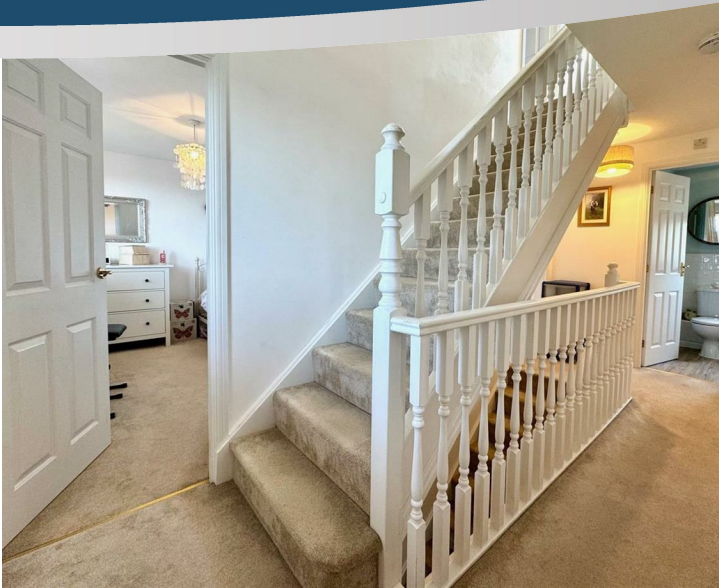
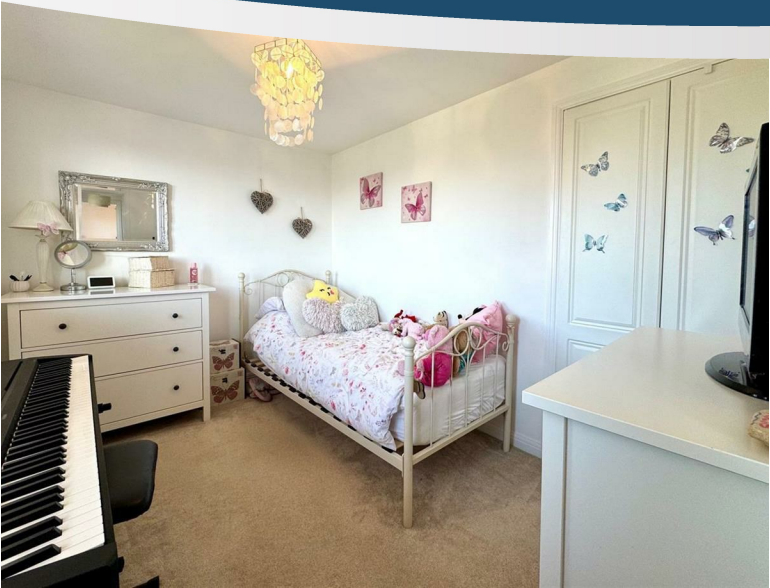
Comprising a neutral suite to include panelled bath with mains fed shower over and tiled surround, pedestal wash hand basin with tiled splashback and low-level WC. Frosted window to the rear elevation. Part tiled walls.

**SECOND FLOOR STAIRS AND LANDING**

Spacious, light and airy landing area with Velux window to the rear elevation. Access to all second-floor rooms. Useful built-in storage cupboard housing the water tank and with inset shelving.

**BEDROOM**  
**5.33m x 4.19m (17'5" x 13'8")**

A great size L shaped double bedroom enjoying a fabulous double aspect to the front with far reaching views over surrounding countryside. Velux window the rear elevation.



**GROUND FLOOR**

**ENTRANCE HALL**

Front entrance door leads into a welcoming entrance hall. Stairs to first floor. Access to all ground floor rooms.

**LOUNGE**  
**6.33m x 3.28m (20'9" x 10'9")**

A generous and very well-proportioned front to back reception room enjoying two windows to the front elevation and French doors leading to the rear garden. Feature fireplace with marble hearth and surround.

**DINING ROOM**  
**3.68m x 3.19m (12'0" x 10'5")**

Offers versatile use either as a formal dining space or indeed a second sitting room, enjoying two windows to the front elevation overlooking the gardens.

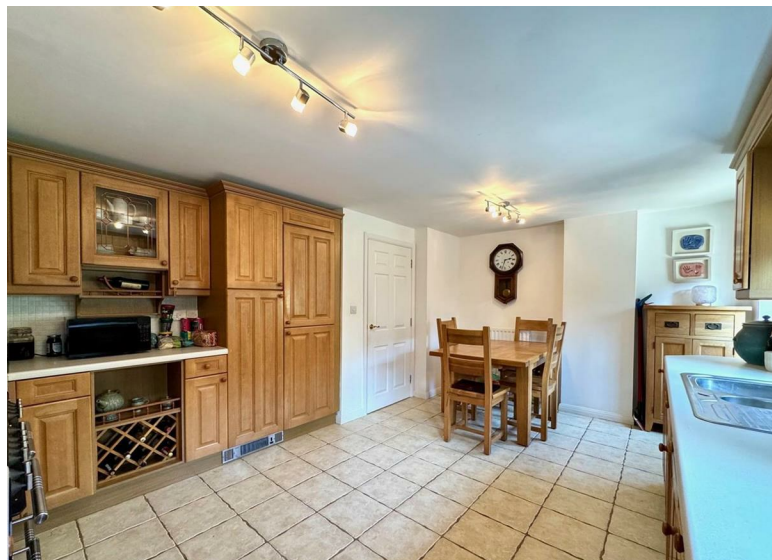
**WC/CLOAKROOM**  
Comprising a two-piece suite to include pedestal wash hand basin with tiled splashback and low-level WC. Part tiled walls.





**KITCHEN/BREAKFAST ROOM**  
**5.10m x 3.80m (16'8" x 12'5")**

Comprises a generous open plan space affording an extensive range of fitted base and eye level solid wood storage units and ample laminate work surfacing over with tiled splashback. Feature freestanding gas Canon Rangemaster Cooker with overhead extractor fan and a range of integrated appliances to include full height fridge/freezer, dishwasher and washing machine. Inset one and a half bowl and drainer stainless steel sink unit with mixer tap. Two windows to the rear elevation enjoying views over the private gardens. Pedestrian door leading to the rear garden. Tiled flooring. Ample space for dining table and chairs.



**FIRST FLOOR STAIRS AND LANDING**

Providing access to all first-floor rooms. Window to the front elevation overlooking the front garden and open countryside beyond. Stairs to second floor.

**PRINCIPAL BEDROOM**

**3.68m x 3.16m (12'0" x 10'4")**

Comprises a sizeable double bedroom with the benefit of two windows to the front elevation enjoying open views. Two sets of built-in wardrobes with inset shelving. Door to :-

**EN-SUITE SHOWER ROOM**

Comprises a neutral suite to include corner shower cubicle with mains fed shower over, pedestal wash hand basin and low-level WC. Frosted window to the rear elevation. Fully tiled walls and flooring.

**BEDROOM 2**

**3.28m x 2.98m (10'9" x 9'9")**

A generous double bedroom with window to the rear elevation enjoying views over the gardens. Two built-in wardrobes with inset shelving and hanging rail. Door to :-

